

Dube TradePort

Focusing on AgriZone Water management

Erna du Plessis

25 February 2015



Overview

- Introduction and background
- Water resource management

Introduction and background

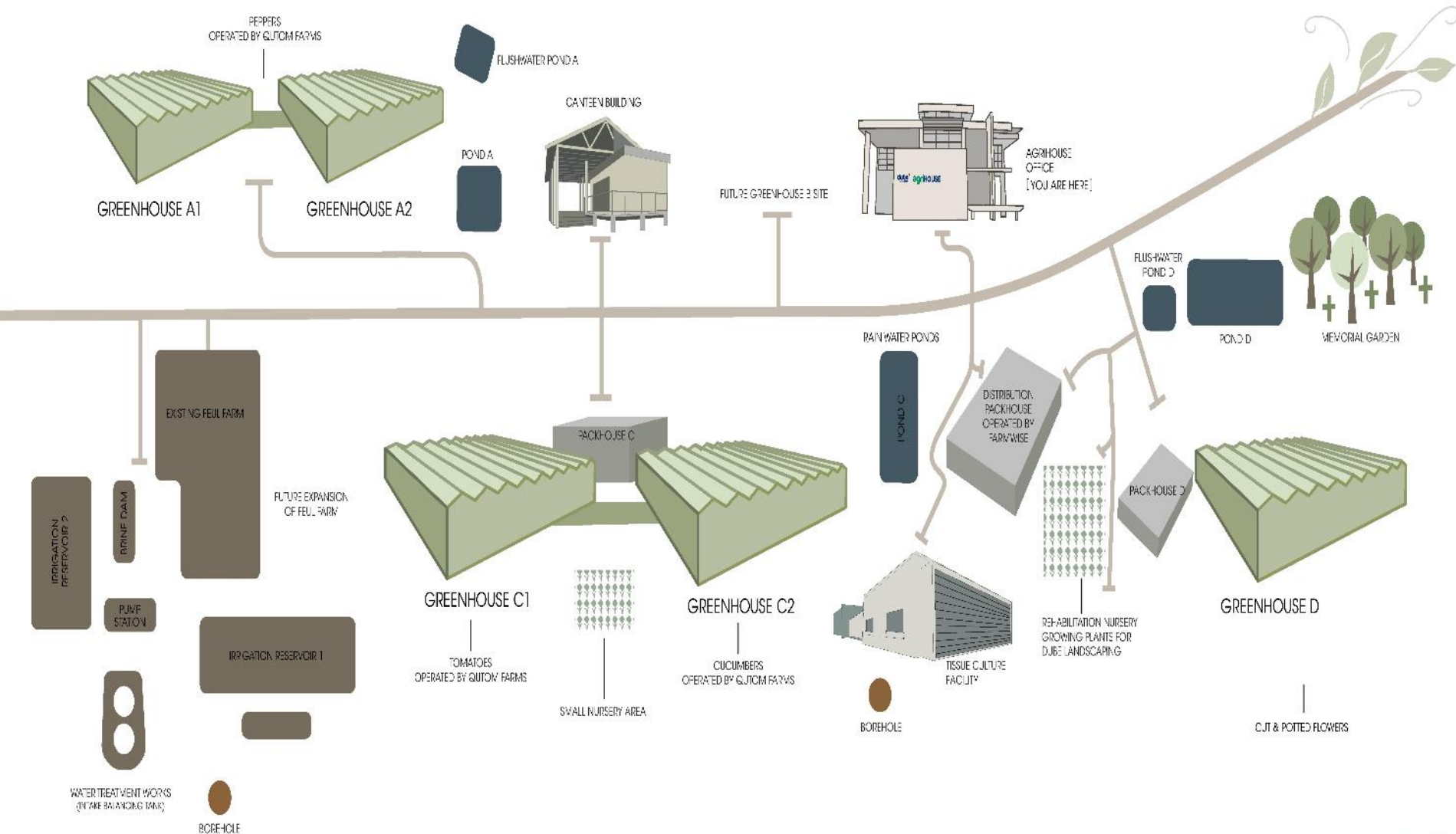
- Dube Tradeport Corporation
 - Business entity of the KwaZulu-Natal Provincial Government
 - Develop the province's biggest infrastructural project.
 - Recently-declared Industrial Development Zone (IDZ)

Introduction and background: DTP



Click zones for more info

Introduction and background: AgriZone

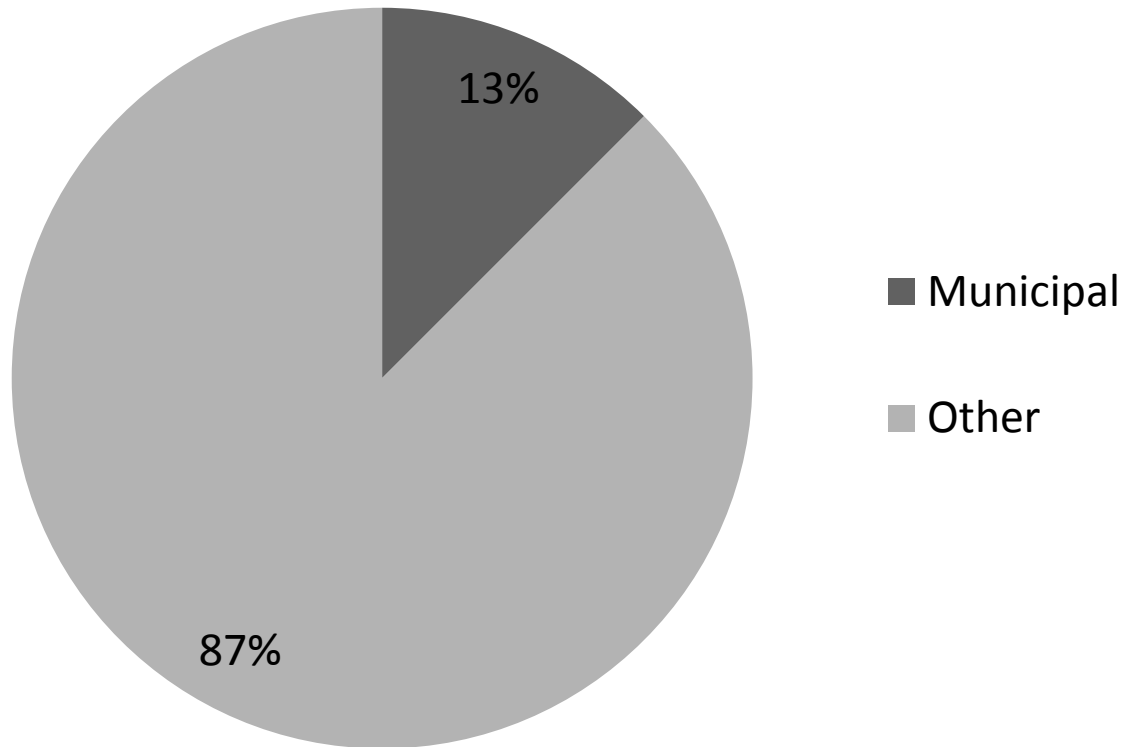


Introduction and background

- Irrigation demand hydroponic production
 - Summer months demand up to
 - 1ML/day
 - Average demand throughout the year:
 - 0,35 ML/day
- Municipal water demand
 - Average demand throughout the year:
 - 0,05 ML/day
- Waste water from processes
 - 0,2 ML/day

Introduction and background

Average supply from different sources



Water resource management: Rainwater

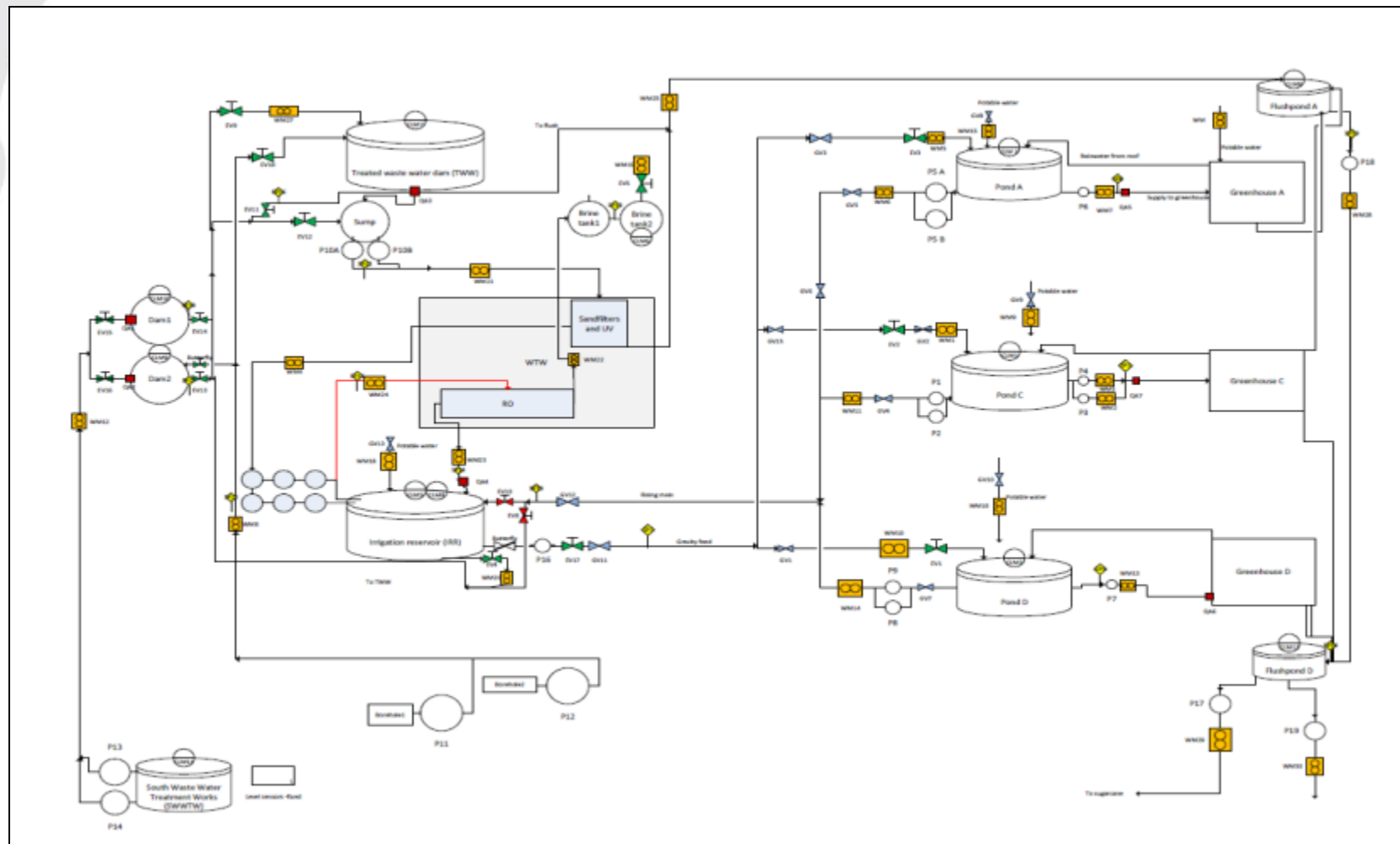
- Rainwater harvesting
 - 65 ML storage



Water resource management: Supplementing rainwater

- **AgriZone Water Treatment Works**
 - Reverse Osmosis, UV, sandfiltration
- **Sources**
 - Boreholes
 - GLV treated effluent (limited)
 - Recommended technology
 - UF
 - Costs and other factors
- **Management system**

Water resource management: System



Water resource management: Waste process water

- Hydroponic irrigation system waste water – recycling process:



- Saving costs, reducing impact

Water resource management: Financial

- Saving approximately 50% on costs during dry seasons
- Equipment pay-back
- Saving on waste process water disposal

DTPC sustainability

- **Dube City**
- **A green future**

Industrial development and rainwater harvesting strategy



Thank you